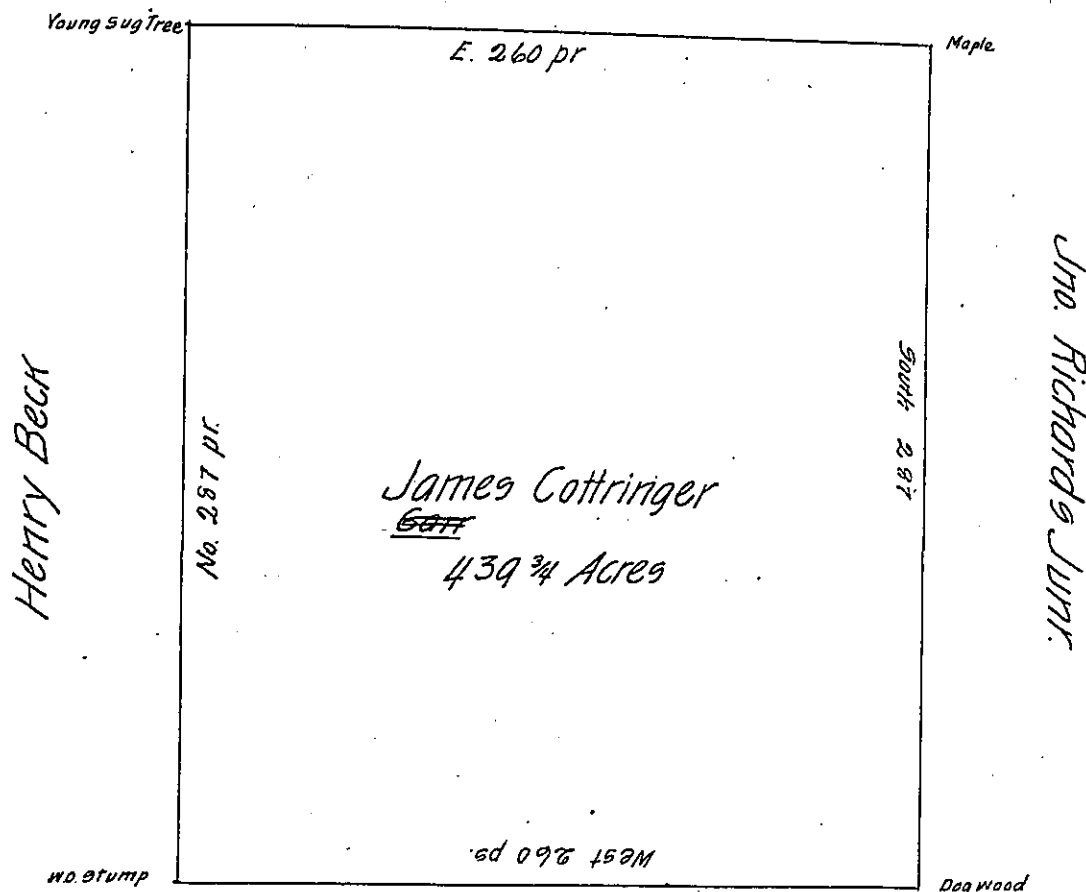


Henry Styles



John Craig & Co.

Draught of a Survey made in pursuance of a Warrant granted to James Cottringer dated the 19th July 1792. Situated on the Waters of Wheeling Creek in Washington County. Containing four hundred and thirty Nine Acres & the usual allowance. Surveyed April 3^d 1793.

Jno Hoge D.S.

Daniel Brodhead Esqr S.G.

IN TESTIMONY that the above is a copy of the original remaining on file in the Department of Internal Affairs of Pennsylvania, made conformably to an Act of Assembly approved the 16th day of February, 1833, I have hereunto set my Hand and caused the Seal of said Department to be affixed at Harrisburg, this Fourth day of April 1904

James B. Brown
Secretary of Internal Affairs.